

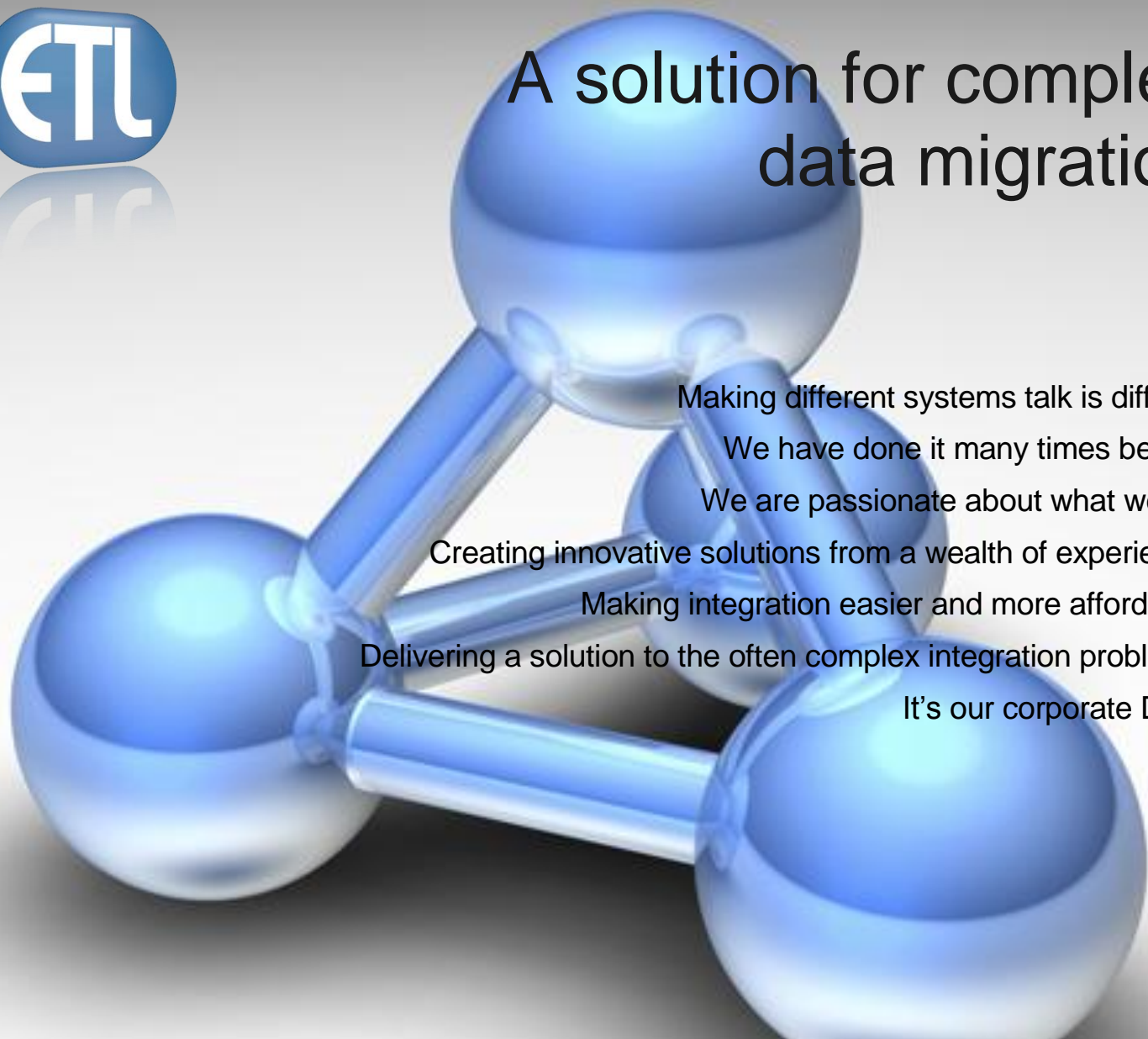


Transformation Manager (TM)



A solution for complex data migration

- Making different systems talk is difficult
- We have done it many times before
- We are passionate about what we do
- Creating innovative solutions from a wealth of experience
- Making integration easier and more affordable
- Delivering a solution to the often complex integration problems
- It's our corporate DNA



TM benefits

TM is an established, tried and tested solution to complex data migration and integration issues.

TM is used in environments which demand stable and secure solutions; for example, in a bank at the heart of an automated foreign exchange trading system, for an aerospace company as part of a mission-critical systems upgrade project, and in an oil company as a toolset that Geoscience engineers can use to perform ad-hoc data loading into a core master database.

Protect Your Investments

Extract, move and use data stored in disparate systems. Consolidate data from multiple systems, locations and environments including legacy and packaged applications.

Reduce Costs

TM enables integration projects to be completed much faster than other methods which translates into lower project costs.

More Efficient

Improve accuracy and reduce the margin for error significantly using our fully integrated design tool.

Intuitive

TM is easy to learn for a business analyst or developer. There isn't a steep learning curve; some clients and partners have completed integration projects after minimal training.

Cost Effective

Download TM from the internet. TM isn't server hosted so you do not require expensive additional hardware.

Total Support

We provide specialist consultancy, training and support from a team of experts who understand your needs.

Configurable and Scalable

TM works with all kinds of system architectures, from the most complex to the most basic. It is capable of being run on a laptop or a server farm.



Transformation Manager has solved some very complex data integration problems and has been proven in the most demanding situations.

Easily Generated Transforms

Turn high-level business logic into executable Java components using SML*. Navigate source and target models with ease.

Flexible Creation of Transforms

TM can handle complex mapping patterns with ease. It is suitable for all levels of complexity.

Rapid Development of Transforms

High-level authoring with drag and drop functionality enables rapid development of transforms. TM comes with a comprehensive library of functions.

Extendable Interface

Access your existing libraries from your transform.

Connects to Multiple Data Sources

TM supports many data sources; for example, flat files, databases, Excel spreadsheets, XML, binary and proprietary systems. Support for databases such as Oracle, SQL Server and PostgreSQL.

Interactive Design Environment

TM has a full range of data set viewing, test set creation, testing and debugging tools, and automatic documentation.

Intuitive Tool

Import, export, convert or subset any form of data model. Edit the data model as and when required.

Multi-platform

TM runs on Windows, Solaris and UNIX on any desktop, laptop and server.

Meta-data Driven

You can access data in any format to capitalise on your existing information system investments.

** transform specific language*

TM features

Even the most complex transform logic is achievable, through the unique language we developed, called Simple Mapping Language (SML).

"TM is an extremely intelligent tool for transforming large, complex datasets."
Global E&P Company



The Perfect Solution

Turn-Key Service

We will design, develop, deliver and support a specific data migration or integration project.

Stand Alone Product

Our cost effective, user and enterprise licences enable you to use TM across your entire organisation, in a group or for a specific project.

[Contact us](#) to discuss the best solution for your needs

etl solutions



contact details

**ETL Solutions Limited
Technium CAST
Ffordd Penlan
Parc Menai
Bangor
Gwynedd
LL57 4HJ
United Kingdom
Tel: +44 (0)1248 675 070**

info@etlsolutions.com
www.etlsolutions.com